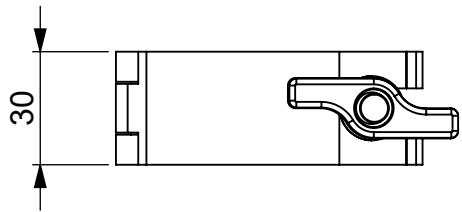
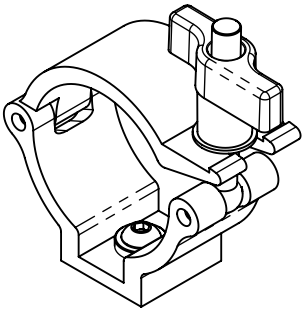
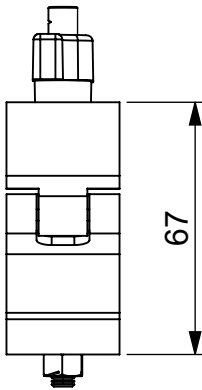
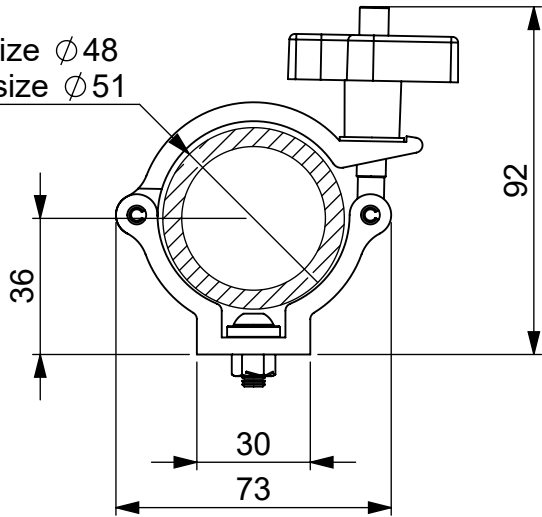


REVISION HISTORY

DATE	REV.	DESCRIPTION	BY
22.08.2019	A	First release	LTousgaard

Min. tube size $\varnothing 48$
Max. tube size $\varnothing 51$



© 2019 HARMAN Professional Denmark ApS
PROPRIETARY AND CONFIDENTIAL PROPERTY OF
HARMAN. DO NOT DISCLOSE, REPRODUCE, OR
PUBLISH WITHOUT WRITTEN HARMAN APPROVAL.

ROHS

RESTRICTION OF HAZARDOUS SUBSTANCES
ALL MATERIALS USED IN THIS PART MUST BE
ROHS COMPLIANT.

SUPPLIER SHALL PROVIDE A CERTIFICATE OF
ROHS COMPLIANCE WITH THE FIRST ARTICLE.

Material
Aluminium

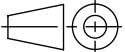
General linear tolerance

General angular tolerance

General geometrical tolerance

DIMENSIONS SHOWN ARE FOR REFERENCE AND INSPECTION
ONLY. REFER TO CAD MODEL PROVIDED WITH THIS DRAWING
FOR OVERALL DEFINITION OF PART GEOMETRY.

FIRST
ANGLE
PROJECTION



Martin
HARMAN

TITLE (Model in view 91611790-A)

Low Profile VDO Sceptron/Fatron Half Coupler

NO. REV

SIZE A4	SCALE 1:2	UNIT mm	DO NOT SCALE DRAWING	SHEET OF 1 1
-------------------	---------------------	-------------------	-------------------------	------------------------

HARMAN Professional
Denmark ApS
Olof Palmes Allé 44
DK 8200 Aarhus N

General Technical Specification apply to this item